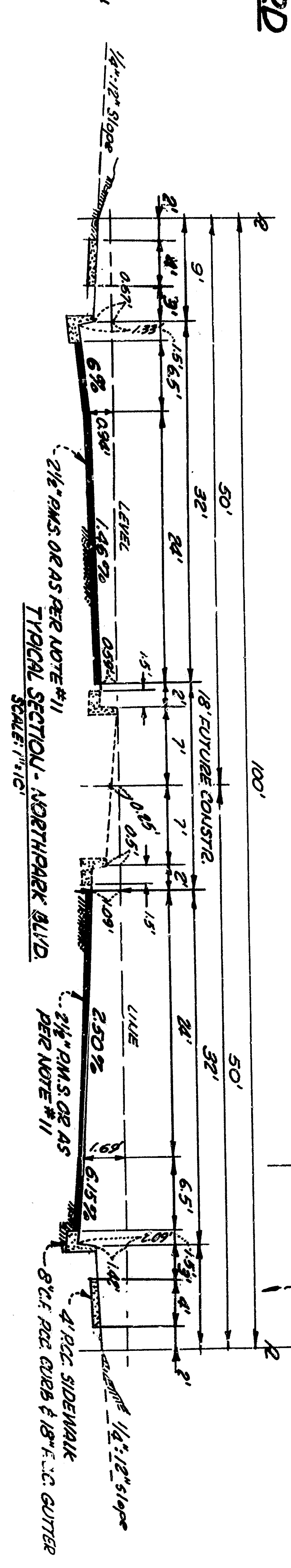


- NOTES**
- All work shown on these plans shall be done in conformity with applicable provisions of specifications No. 1271 of the City of San Bernardino.
 - 6" x 8" frames with connecting sewer to be installed on an upper grade of 1.0000.
 - All existing manholes shall be constructed on an upper grade of 1.0000.
 - All manhole connections are approximate and exact locations shall be determined in the field.
 - Manhole frames and covers to be constructed by Sewer Contractor 6' below official grade shown and upon completion of paving, the Sewer Contractor shall adjust manhole frames and covers to said official grade.
 - All Standard Cross Sections of Manhole and/or other are as per City of San Bernardino Department of Engineering Std. Drawing No. 2581 A. (Sidewalk location as shown) these plans are obtained by a search of available records to the best of our knowledge there are no existing utilities except as shown.
 - The Contractor is required to take due precautionary measures to protect the utility lines shown and any other lines not of record or not shown on these drawings.
 - Sewer laterals to be constructed of either "Wedge-Lock", "Speed-Seal", or "Band-Seal" clay pipe or underfoot cement pipe. Sewer mains shall be constructed of either "Wedge-Lock", "Speed-Seal", or "Band-Seal" clay pipe.
 - Manhole frames and covers shall be the Atlanta Foundry No. 8 (Type "A") frames and covers.
 - Manhole frames and covers shall be the Atlanta Foundry No. 10 (Type "B") frames and covers.
 - Manhole frames and covers shall be the Atlanta Foundry No. 12 (Type "C") frames and covers.
 - Manhole frames and covers shall be the Atlanta Foundry No. 14 (Type "D") frames and covers.
 - Manhole frames and covers shall be the Atlanta Foundry No. 16 (Type "E") frames and covers.
 - Manhole frames and covers shall be the Atlanta Foundry No. 18 (Type "F") frames and covers.
 - Manhole frames and covers shall be the Atlanta Foundry No. 20 (Type "G") frames and covers.
 - Manhole frames and covers shall be the Atlanta Foundry No. 22 (Type "H") frames and covers.
 - Manhole frames and covers shall be the Atlanta Foundry No. 24 (Type "I") frames and covers.
 - Manhole frames and covers shall be the Atlanta Foundry No. 26 (Type "J") frames and covers.
 - Manhole frames and covers shall be the Atlanta Foundry No. 28 (Type "K") frames and covers.
 - Manhole frames and covers shall be the Atlanta Foundry No. 30 (Type "L") frames and covers.
 - Manhole frames and covers shall be the Atlanta Foundry No. 32 (Type "M") frames and covers.
 - Manhole frames and covers shall be the Atlanta Foundry No. 34 (Type "N") frames and covers.

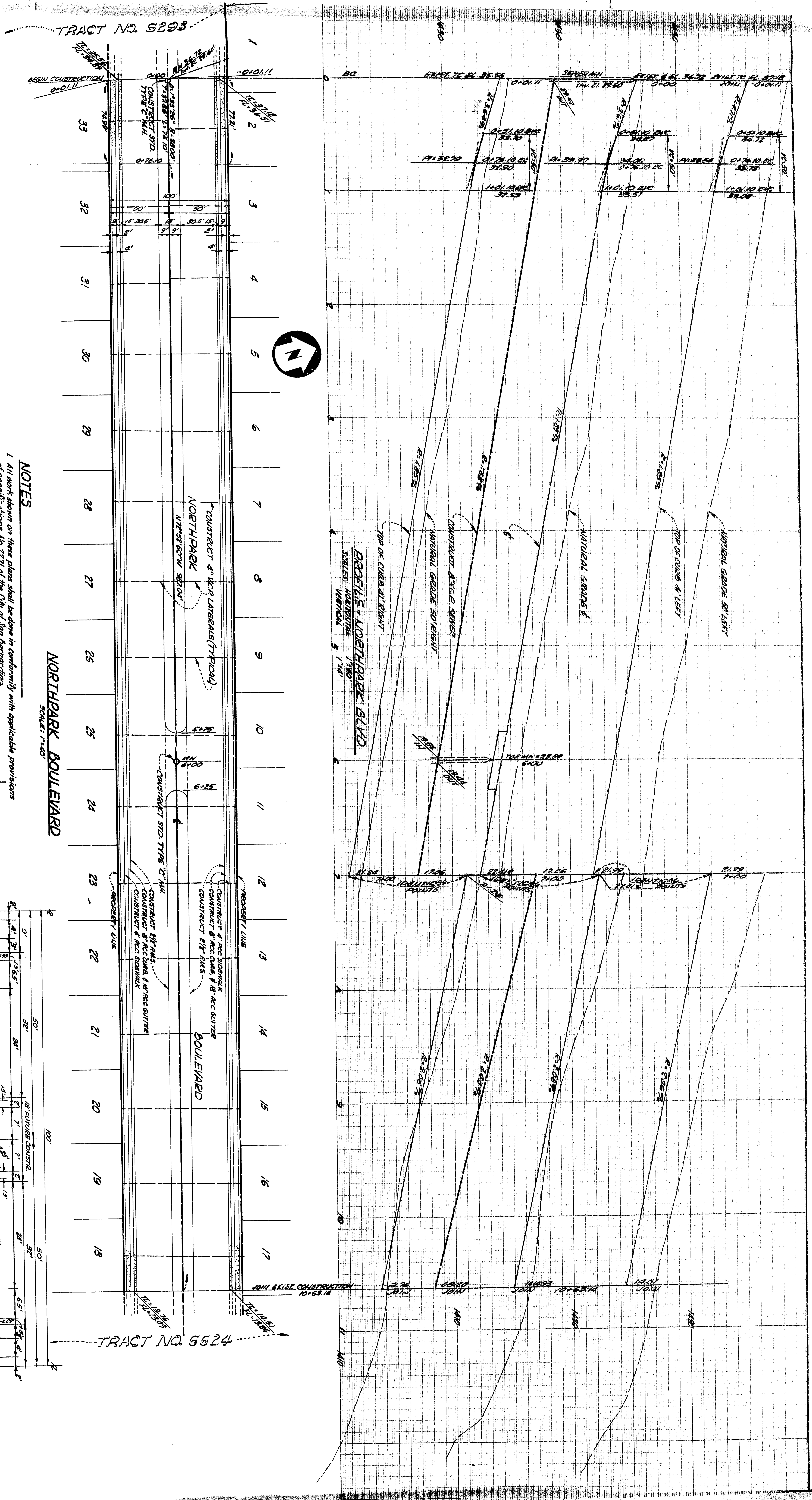
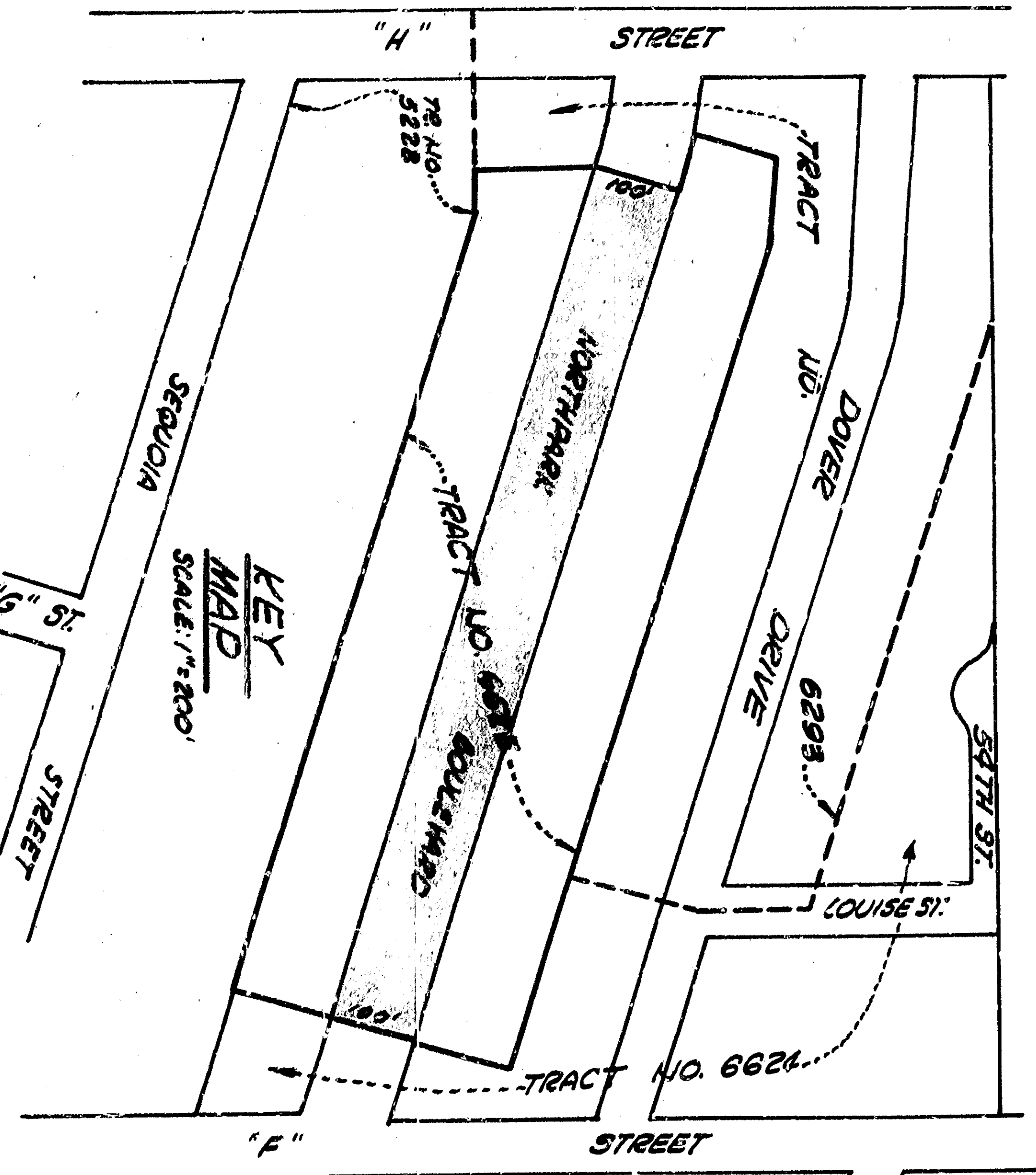


DEPARTMENT OF ENGINEERING
CITY OF SAN BERNARDINO
TRACT NO. 6625
STREET IMPROVEMENT PLAN & SEWER RELAY

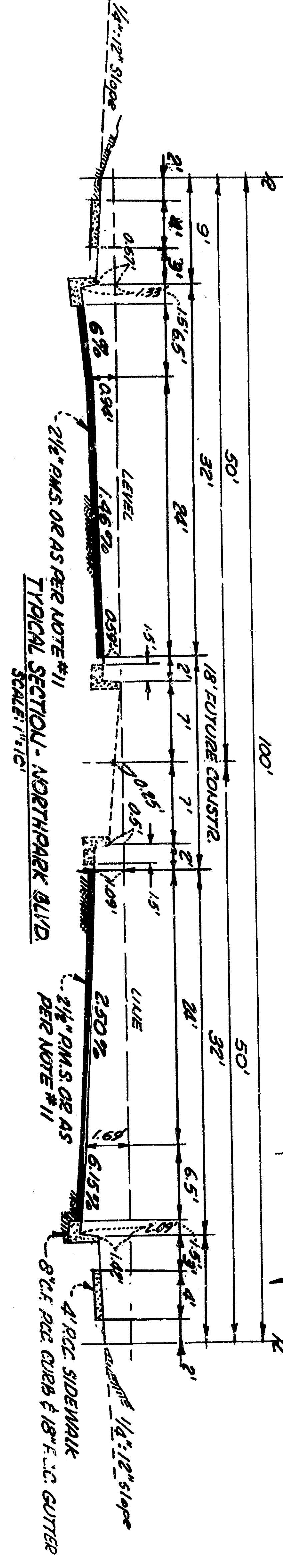
DESIGNED BY: [Name]
CHECKED BY: [Name]
DATE: [Date]

ENGINEER: [Name]
REGISTERED CIVIL ENGINEER NO. 15655

SCALE: 1"=40'



- NOTES**
- All work shown on these plans shall be done in conformity with applicable provisions of specifications No. 1271 of the City of San Bernardino.
 - 6" x 6" pipes with connecting sewer to be installed on an upper grade of 1.0000.
 - All existing manholes shall be constructed on an upper grade of 1.0000.
 - All manhole connections are approximate and exact locations shall be determined in the field.
 - Manhole frames and covers to be constructed by Sewer Contractor 6' below official grade shown and upon completion of paving, the Sewer Contractor shall adjust manhole frames and covers to said official grade.
 - All Standard Cross Sections of Manhole and Culvert are as per City of San Bernardino Department of Engineering Std. Drawing No. 2581 A. (Sidewalk location as shown) on these plans are obtained by a search of available records to the best of our knowledge there are no existing utilities except as shown.
 - The Contractor is required to take due precautionary measures to protect the utility lines shown and any other lines not of record or not shown on these drawings.
 - Sewer laterals to be constructed of either "Wedge-Lock", "Speed-Seal", or "Band-Seal" clay pipe or underfoot cement pipe. Sewer mains shall be constructed of either "Wedge-Lock", "Speed-Seal", or "Band-Seal" clay pipe.
 - Manhole frames and covers shall be the Atlanta Foundry No. 8 (Type "A") 18" x 18" x 4" deep.
 - Manhole frames and covers shall be the Atlanta Foundry No. 10 (Type "B") 24" x 24" x 4" deep.
 - Manhole frames and covers shall be the Atlanta Foundry No. 12 (Type "C") 30" x 30" x 4" deep.
 - Manhole frames and covers shall be the Atlanta Foundry No. 14 (Type "D") 36" x 36" x 4" deep.
 - Manhole frames and covers shall be the Atlanta Foundry No. 16 (Type "E") 42" x 42" x 4" deep.
 - Manhole frames and covers shall be the Atlanta Foundry No. 18 (Type "F") 48" x 48" x 4" deep.
 - Manhole frames and covers shall be the Atlanta Foundry No. 20 (Type "G") 54" x 54" x 4" deep.
 - Manhole frames and covers shall be the Atlanta Foundry No. 22 (Type "H") 60" x 60" x 4" deep.
 - Manhole frames and covers shall be the Atlanta Foundry No. 24 (Type "I") 66" x 66" x 4" deep.
 - Manhole frames and covers shall be the Atlanta Foundry No. 26 (Type "J") 72" x 72" x 4" deep.
 - Manhole frames and covers shall be the Atlanta Foundry No. 28 (Type "K") 78" x 78" x 4" deep.
 - Manhole frames and covers shall be the Atlanta Foundry No. 30 (Type "L") 84" x 84" x 4" deep.
 - Manhole frames and covers shall be the Atlanta Foundry No. 32 (Type "M") 90" x 90" x 4" deep.
 - Manhole frames and covers shall be the Atlanta Foundry No. 34 (Type "N") 96" x 96" x 4" deep.
 - Manhole frames and covers shall be the Atlanta Foundry No. 36 (Type "O") 102" x 102" x 4" deep.
 - Manhole frames and covers shall be the Atlanta Foundry No. 38 (Type "P") 108" x 108" x 4" deep.
 - Manhole frames and covers shall be the Atlanta Foundry No. 40 (Type "Q") 114" x 114" x 4" deep.
 - Manhole frames and covers shall be the Atlanta Foundry No. 42 (Type "R") 120" x 120" x 4" deep.
 - Manhole frames and covers shall be the Atlanta Foundry No. 44 (Type "S") 126" x 126" x 4" deep.
 - Manhole frames and covers shall be the Atlanta Foundry No. 46 (Type "T") 132" x 132" x 4" deep.
 - Manhole frames and covers shall be the Atlanta Foundry No. 48 (Type "U") 138" x 138" x 4" deep.
 - Manhole frames and covers shall be the Atlanta Foundry No. 50 (Type "V") 144" x 144" x 4" deep.
 - Manhole frames and covers shall be the Atlanta Foundry No. 52 (Type "W") 150" x 150" x 4" deep.
 - Manhole frames and covers shall be the Atlanta Foundry No. 54 (Type "X") 156" x 156" x 4" deep.
 - Manhole frames and covers shall be the Atlanta Foundry No. 56 (Type "Y") 162" x 162" x 4" deep.
 - Manhole frames and covers shall be the Atlanta Foundry No. 58 (Type "Z") 168" x 168" x 4" deep.
 - Manhole frames and covers shall be the Atlanta Foundry No. 60 (Type "AA") 174" x 174" x 4" deep.
 - Manhole frames and covers shall be the Atlanta Foundry No. 62 (Type "AB") 180" x 180" x 4" deep.
 - Manhole frames and covers shall be the Atlanta Foundry No. 64 (Type "AC") 186" x 186" x 4" deep.
 - Manhole frames and covers shall be the Atlanta Foundry No. 66 (Type "AD") 192" x 192" x 4" deep.
 - Manhole frames and covers shall be the Atlanta Foundry No. 68 (Type "AE") 198" x 198" x 4" deep.
 - Manhole frames and covers shall be the Atlanta Foundry No. 70 (Type "AF") 204" x 204" x 4" deep.
 - Manhole frames and covers shall be the Atlanta Foundry No. 72 (Type "AG") 210" x 210" x 4" deep.
 - Manhole frames and covers shall be the Atlanta Foundry No. 74 (Type "AH") 216" x 216" x 4" deep.
 - Manhole frames and covers shall be the Atlanta Foundry No. 76 (Type "AI") 222" x 222" x 4" deep.
 - Manhole frames and covers shall be the Atlanta Foundry No. 78 (Type "AJ") 228" x 228" x 4" deep.
 - Manhole frames and covers shall be the Atlanta Foundry No. 80 (Type "AK") 234" x 234" x 4" deep.
 - Manhole frames and covers shall be the Atlanta Foundry No. 82 (Type "AL") 240" x 240" x 4" deep.
 - Manhole frames and covers shall be the Atlanta Foundry No. 84 (Type "AM") 246" x 246" x 4" deep.
 - Manhole frames and covers shall be the Atlanta Foundry No. 86 (Type "AN") 252" x 252" x 4" deep.
 - Manhole frames and covers shall be the Atlanta Foundry No. 88 (Type "AO") 258" x 258" x 4" deep.
 - Manhole frames and covers shall be the Atlanta Foundry No. 90 (Type "AP") 264" x 264" x 4" deep.
 - Manhole frames and covers shall be the Atlanta Foundry No. 92 (Type "AQ") 270" x 270" x 4" deep.
 - Manhole frames and covers shall be the Atlanta Foundry No. 94 (Type "AR") 276" x 276" x 4" deep.
 - Manhole frames and covers shall be the Atlanta Foundry No. 96 (Type "AS") 282" x 282" x 4" deep.
 - Manhole frames and covers shall be the Atlanta Foundry No. 98 (Type "AT") 288" x 288" x 4" deep.
 - Manhole frames and covers shall be the Atlanta Foundry No. 100 (Type "AU") 294" x 294" x 4" deep.



DEPARTMENT OF ENGINEERING
CITY OF SAN BERNARDINO
TRACT NO. 6625
STREET IMPROVEMENT PLAN &
SEWER RELAY

DESIGNED BY: [Name]
CHECKED BY: [Name]
DATE: [Date]

ENGINEER: [Name]
REGISTERED CIVIL ENGINEER NO. 15655

SCALE: 1"=40'